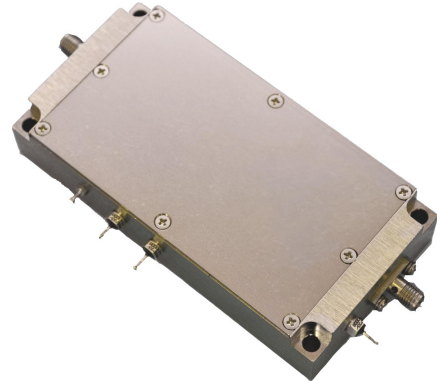


## Wide Band RF Amplifier

- \* Operating Frequency : 0.5-2.5 GHz
- \* Saturated Power : 16W Psat Typical
- \* Gain : 28 dB
- \* Single, Regulated 30V Supply
- \* Enable/Disable Switch



**Description:** Ultra wideband operation, Fiber Drivers, Test Instrumentation, All Purpose Power Amp  
**ELECTRICAL SPECIFICATION @ VDD= +30 VDC Temp. = 25°C, 50Ω System**

Parameter	Symbol	Min	Typ	Max	Unit
Operating Frequency	BW	0.5		2.5	GHz
Gain	G	26	28		dB
Gain Flatness	$\Delta G$		$\pm 1.0$	$\pm 1.5$	dB
Power Added Efficiency	PAE		30		%
Power Output	Psat	40	42		dBm
Power Output @ 3 dB compression	P3 dB	38	39		dBm
Return Loss input	S11		2.5:1		Ratio
Operating Voltage	Vdc		30		Volts
Quiescent Current	Idq		600		mA

### MECHANICAL SPECIFICATION

Parameter	Description	Limits	Units
Dimension	4.0 x 2.5 x1.0		inches
RF Connectors IN/OUT	SMA-F		
DC Connector	Filtered DC		

### PROTECTIONS

Parameter	Limits	Units
RF Input Power	19	dBm
Reverse Polarity Protection		
Load VSWR	5:01	RATIO
Stability	Unconditional	

### ENVIROMENTAL CHARACTERISTICS

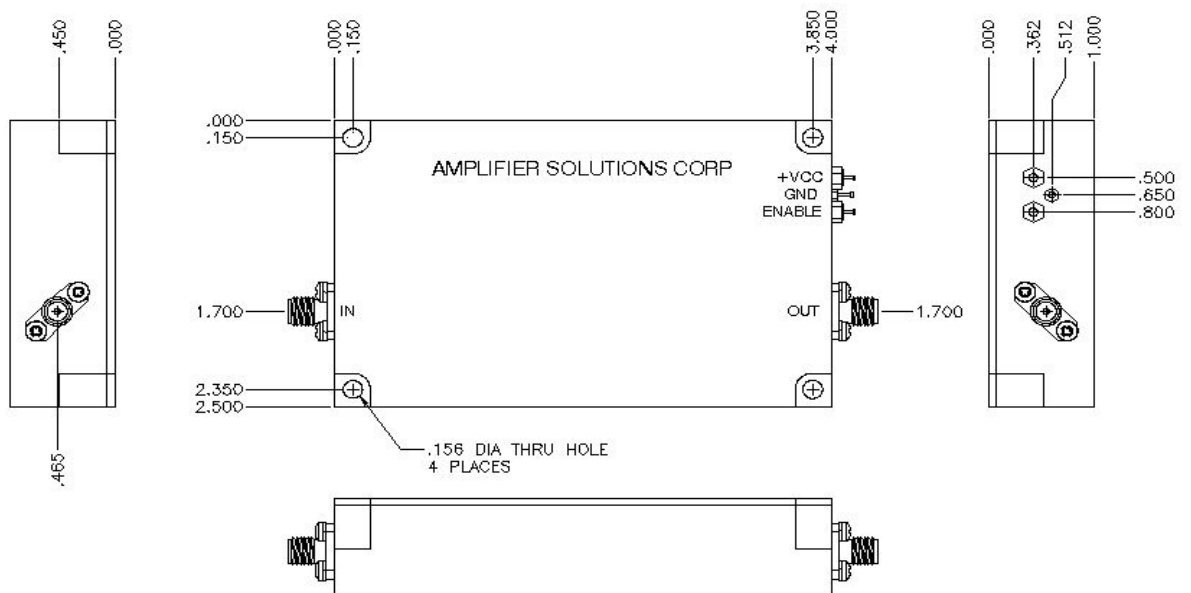
Parameter	Symbol	Min.	Typ.	Max	Units
Operating Case Temperature	Tc	0		75	°C
Storage Temperature	Tstg	-55		125°C	°C

3009 Old State Road Telford, PA 18969

Web: [www.amplifiersolutions.com](http://www.amplifiersolutions.com)  
 Email: [sales@amplifiersolutions.com](mailto:sales@amplifiersolutions.com)

Tel: 215-799-2561  
 Fax: 215-799-2563

# Outline



3009 Old State Road Telford, PA 18969

Web: [www.amplifiersolutions.com](http://www.amplifiersolutions.com)  
 Email: [sales@amplifiersolutions.com](mailto:sales@amplifiersolutions.com)

Tel: 215-799-2561  
 Fax: 215-799-2563